

October

Members

Boyd Hebert	01-Oct
Robert Naquin	02-Oct
John Weimer	02-Oct
Barry Landry	03-Oct
Lindy Hoffmann	08-Oct
Leo Pitre	10-Oct
Al Badeaux	26-Oct
Ben Malbrough	27-Oct

Spouses

Faye Kalpakis	03-Oct
Anne Rodrigue	10-Oct
Dianne Frost	12-Oct
Roseann Guillermo	22-Oct
Jason Flores	22-Oct
Nickole Chiasson	27-Oct
Sheela Plater	31-Oct



NOTES:

4 October 2016

www.rotary6200.org

www.rotary.org

Volume 13 #40

LE POISSON ROUGE ROTARY CLUB OF THIBODAUX

Club 2635, Chartered 1936
Meeting Tuesdays at Noon
Envie Restaurant

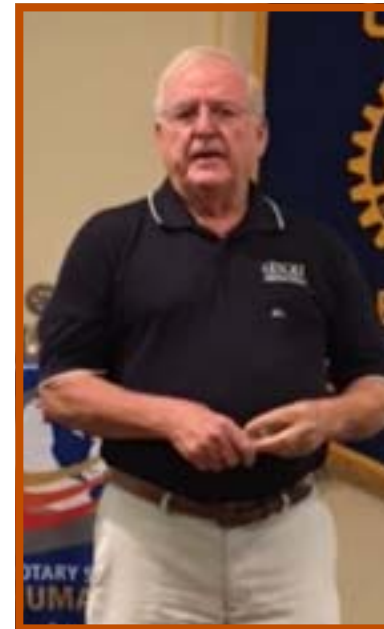


Pres - Carroll Falcon

THE FOUR WAY TEST

- 1.) Is it the **TRUTH**?
- 2.) Is it **FAIR** to all concerned?
- 3.) Will it build **GOOD WILL** and **BETTER FRIENDSHIPS**?
- 4.) Will it be **BENEFICIAL** to all concerned?

www.thibodauxrotary.org



Robert "Bob" Thibodeaux

Robert "Bob" Thibodeaux former governor Mike Foster is the President/Owner of as Consulting Arborist for all "Bob's Tree Preservation state tree matters. Bob works Inc". He has studied at a variety of universities including USL, LSU, SU, Appalachia State University, Paul Smith College, Consulting Arborist Academy and Landscape Design School. Bob is certified with the International Society of Arboriculture. Bob provides consulting as well as tree care services to plantations, churches, cities, cemeteries, court houses, gardens, universities, and other entities. He was appointed by

former governor Mike Foster is the President/Owner of as Consulting Arborist for all "Bob's Tree Preservation state tree matters. Bob works Inc". He has studied at a variety of universities including USL, LSU, SU, Appalachia State University, Paul Smith College, Consulting Arborist Academy and Landscape Design School. Bob is certified with the International Society of Arboriculture. Bob provides consulting as well as tree care services to plantations, churches, cities, cemeteries, court houses, gardens, universities, and other entities. He was appointed by

Bob shared his knowledge about preserving Live Oaks. Live Oaks are coastal species and one should never cut limbs are often mistakenly trimmed but should not be.

Officers

President.....Carroll Falcon
President-Elect.....Kathy Benoit
Secretary-Treasurer.....John Doucet
Past President.....Bobby Marcello

Sgt-at-Arms.....Craig Stanga
Bulletin Editor.....Janice Tregre
Web Master.....Kathy Benoit
Program Chair.....Ken Chadwick
Ken.chadwick@nicholls.edu

Board of Directors

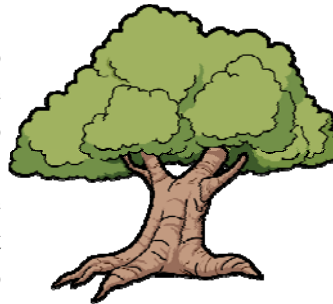
Danny Cavell
 Shay Holloway
 Patrice Oncale

Kevin Gros
 Skipper Holloway

Foundation Chair.....Skipper Holloway
2015-16 Dist. 6200 Governor: Francis Nezianya
2015-16 International Pres.John Germ

The limbs act as a natural barrier to storm winds and hurricanes. When cutting the limbs of a tree, one put more unnecessary pressure on other parts of the tree, thus damaging the tree. Live Oaks can live up to 2000 years in ideal conditions. It is our obligation to preserve Live Oaks for future generations. The trunk needs to be visible, and not mulched high because it develops additional roots in the mulch. Improperly mulching shortens the trees life, as the roots the tree needs start to suffocate.

Bob expressed that he has saddened by the fact that people have become disconnected to nature. We need to teach the younger generations to take care of the land. We need to maintain the ecosystem. For more info or to contact Bob go to www.bobstree.com.



PUMPKINS, SCARECROWS, GHOSTS SAYING "BOO"
"WITCH" FRIENDS WILL JOIN US TO SEE WHAT FUN WE CAN BREW?

DELTA
DELTA INSPECTION PROUDLY PRESENTS

THE 8TH ANNUAL
NIGHT at the BOO-SEUM
WITH SPARKY

PARTNERSHIP WITH THIBODAUX VOLUNTEER FIRE DEPARTMENT
CELEBRATING FIRE PREVENTION MONTH

Friday, October 21st
5 to 9 pm
Thibodaux Firemen's Fairgrounds
(corner of Tiger Drive and Parish Road)
\$8 in advance through 10/20
at BCCM, LaHaye Orthodontics, and Lynn's Little Feet
\$10 at gate

GAMES & ACTIVITIES!
- ACTIVITIES WILL BE SEPARATE FROM TRICK-OR-TREAT AREA
- SEPARATE TODDLER AREA

GREAT FOOD & KID-FRIENDLY BEVERAGES WILL BE AVAILABLE FOR PURCHASE

TRICK-OR-TREAT, SMELL MY FEET...
IF YOU WEAR YOUR COSTUME THAT WOULD BE REALLY NEAT!
(NOTHING SCARY OR GORY)

bc bayou country children's museum
PM ROUSES PREMIUM IN-KIND SPONSOR

ALL PROCEEDS BENEFIT THE BAYOU COUNTRY CHILDREN'S MUSEUM.
CALL 985.446.2200 OR VISIT WWW.BCCM.INFO FOR MORE INFORMATION.

Area Clubs for Meeting Makeup's		
Town	Day/Time	Location
Houma	Wed/Noon	Quality Inn
Houma Sunrise	Tue/7:30 AM	Cannata's Cafe
Houma-Terre	Thur/Noon	Quality Inn
Patterson	Wed/6:30 PM.	Harbor Seafood Inn
Grand Isle	Wed/7:00 PM.	Community Center
Donaldsonville	Thur/Noon	Café Lafourche
Lockport	Thur/Noon	C'est Cajun Catering
Morgan City	Thur/Noon	Petroleum Club
Golden Meadow	Thur/7:00 PM	P.J.'s Fed Pond
EarlyAct Club	1st/3rd Tue/7:55 AM	St Charles Elem.
NSU Rotaract	2nd&4th Thurs 4:30 PM	LeBijou

Upcoming Speakers

OCT 4
Beau and Michelle Brooks
UpSide Downs

OCT 11
Nikki Waltrich
AmeriCorp

THIBODAUX ROTARY CLUB MEMBERSHIP OCTOBER 2016

Angelloz, E.A PHF+1/SM/PP/C85	Giardina, Jake C85	Moreaux, Brett
Arthurs, Anna	Gossen, Steve H/PHF+1/PP/GSE	Murphy, Bruce PHF
Ayo, Donald H/PHF/PP	Grace, Charlotte	Naquin, Robert C85/PHF/SM
Badeaux, Al C85/PHF+1/SM	Griffin, Jay PHF/SM	Olivier, Donnie
Barrilleaux, Donald SM	Gros, Jamie SM	Oncale, Patrice
Barrilleaux, Laynie PHF+2/SM/PP	Gros, Kevin	Palmer, Gary PHF/SM
Benoit, Dino PHF/SM	Guillermo, Claudio C85/PHF/SM	Parro, Randy C85/PHF
Benoit, Kathy PHF+2/SM	Guin, Shane SM	Peltier, Jimmy C85/PHF+1/PP
Ber, Sheard PHF/SM	Harang, Ben	Peltier, Stephen PHF+1
Berthelot, Greg	Hebert, Boyd	Pitre, Leo
Blair, Bob PHF/H/PP	Hebert, Craig PHF+1/SM	Plater, David C85
Block, Harold C85	Himel, Eddie SM	Porche, Matthew SM
Boudreaux, David E C85/PHF	Hochstetler, Bill C85/PHF+1/PP	Rathle, Frank
Bourgeois, Ron PHF/SM	Hoffman, Lindy H/PHF+1/PP/RFE	Ray, Jason
Bouterie, Ed C85/PHF	Holloway, Sandy PHF+2 MD/SM/GSE/PP	Riviere, Robert PHF+1/SM/PP
Bouterie, Rick C85	Holloway, Shay PHF/SM	Robichaux, Doug SM
Callais, Harold	Holloway, Skip PHF MD/SM/PP/PAG/GSE/H	Robichaux, Tim
Callais, Kristen	Howard, Barton	Rodrigue, Brian SM
Cavell, Danny PHF+2/SM	Howell, Larry PHF/SM	Rodrigue, Chris, Jr. SM
Cavell, David PHF/SM	Howell, Roe C85/PHF/PP	Russell, Kristine PHF/SM
Chadwick, Ken SM	Jones, Ben PHF	Shaver, Charlie C85/PHF/PP
Chiasson, Mark	Jones, Casey SM	Shaver, John PHF/SM/PP
Clement, Leslie	Jones, Jimmy	Sollars, Fred C85
Cowen, Todd PHF/SM	Kalpakis, Bill C85	Stack, George C85/PHF/PP
Crochet, Monique SM	Kees, Craig SM	Stanga, Craig C85/PHF/PP
Danos, Jim C85/PHF+1/SM	Kolwe, Joe PHF+1/PP	Stentz, Andrea SM
DeLaune, Mark PHF/SM	LaJaunie, Jared	Stock, Greg PHF/SM
Dickie, Rita C85/PHF+1/PP	Landry, Barry PHF/SM	Terrebonne, Justin
Doucet, John	Landry, Steven SM	Tregre, Janice
Duplechain, Curtis C85/PHF	Ledet, Bryce PHF/SM/PP	Waguespack, Lenny
Dupont, John SM	Ledet, Chris	Waitz, David PHF/SM
Edlefsen, Marty C85	Ledet, Jennifer PHF+3/SM/PP	Webre, Craig
Eschete, Tommy	Lombardo, John SM	Weimer, John H
Falcon, Carroll PHF/SM	Maki, Neil H/PHF+1/PP	Weimer, Richard C85/PHF/PP
Falgoust, Woody PHF+1/SM/PP	Malbrough, Benjamin	Wise, Andrew SM
Fernandez, Rusty PHF/SM	Marcello, Bobby PHF/SM/GSE/PP	
Flores, Amy	Marcello, Steven PHF/SM	
Frey, Robert	Martin, Linda	
Frost, Camo H/PHF/PP/GSE	Marsh, Thomas	
Gaubert, Steve SM	Matthews, Joann SM	
Gauthier, Mike H/PHF/PP	Melancon, Josh	

LEGEND

H	Honorary	C85	Club 85	PP	Past President	GSE	Group Study Exchange
PAG	Past Assistant Governor	AG	Assistant Governor	RFE	Rotary Friendship Exchange		
SM	Sustaining Member (\$100 per year)	PHF	Paul Harris Fellow (\$1,000 +)	MD	Major Donor (\$10,000 +)		